



Taylor Place, London, E3

BUTLER & STAG



**Price Guide £300,000 - £325,000**  
**Nestled within the vibrant neighbourhood of Bow, this exquisite one-bedroom apartment epitomizes contemporary urban living. Showcasing immaculate interiors and a private balcony.**



## Leasehold

- Modern Gated Development
- Balcony
- EWS1 Compliant
- Bicycle Storage
- 24hr Concierge
- One Bedroom
- Lift Access To All Levels
- 975 Year Lease Length

As you step into the apartment, you are greeted by a seamless blend of modern design and functionality. The open-plan living area provides a spacious environment, ideal for both relaxation and entertaining guests. Natural light streams through large windows, accentuating the crisp, neutral colour palette.

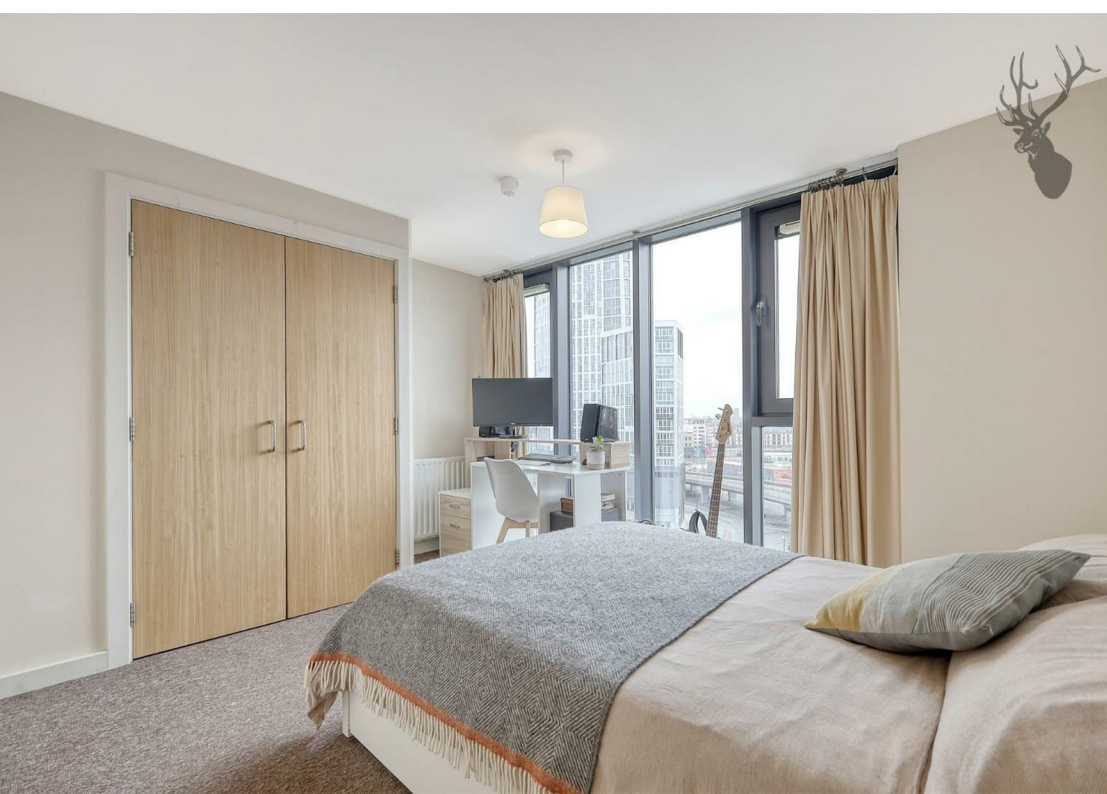
The well-appointed kitchen features high-end appliances, ample storage space, and elegant countertops.

The principal bedroom is a generous proportioned, offering comfort and privacy. The room boasts plush carpeting, built-in wardrobes, and large windows that invite in plenty of sunlight.

The bathroom exudes sophistication with modern fixtures and contemporary tiling.

Situated in Bow, residents will enjoy easy access to an array of amenities, including shops, restaurants, parks, and excellent transport links. With its vibrant atmosphere and convenient location, Bow offers the perfect blend of urban excitement and residential tranquillity.





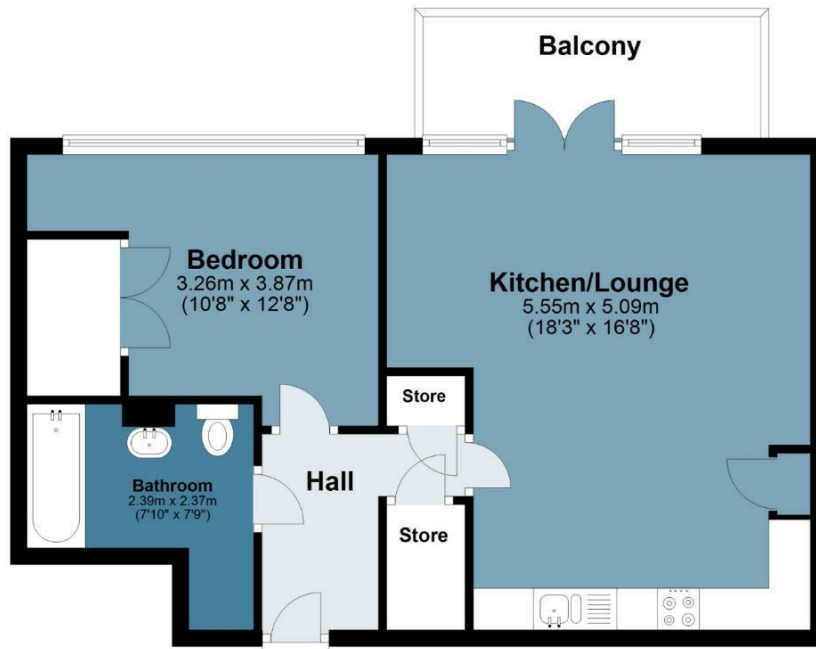
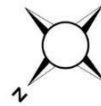
# Caramel Court



Approx. Gross Internal Area 49.5 sq. metres (532.7 sq. feet)

## Eighth Floor

Approx. 49.5 sq. metres (532.7 sq. feet)



Measurements are approximate and for illustration purposes only. While we do not doubt the accuracy and completeness, we advise you conduct a careful independent assessment of the property to determine monetary value  
© @modephoto.uk www.modephoto.co.uk



☎ 020 8102 1236

🏠 508 Roman Road, Bow, London, E3 5LU

✉ bow@butlerandstag.com

[www.butlerandstag.uk](http://www.butlerandstag.uk)

IMPORTANT NOTICE - These particulars have been prepared in good faith and they are not intended to constitute part of an offer or contract. We have not performed a structural survey on this property and the services, appliances and specific fittings have not been tested. All photographs, measurements, floor plans and distances referred to are given as a guide and should not be relied upon.